

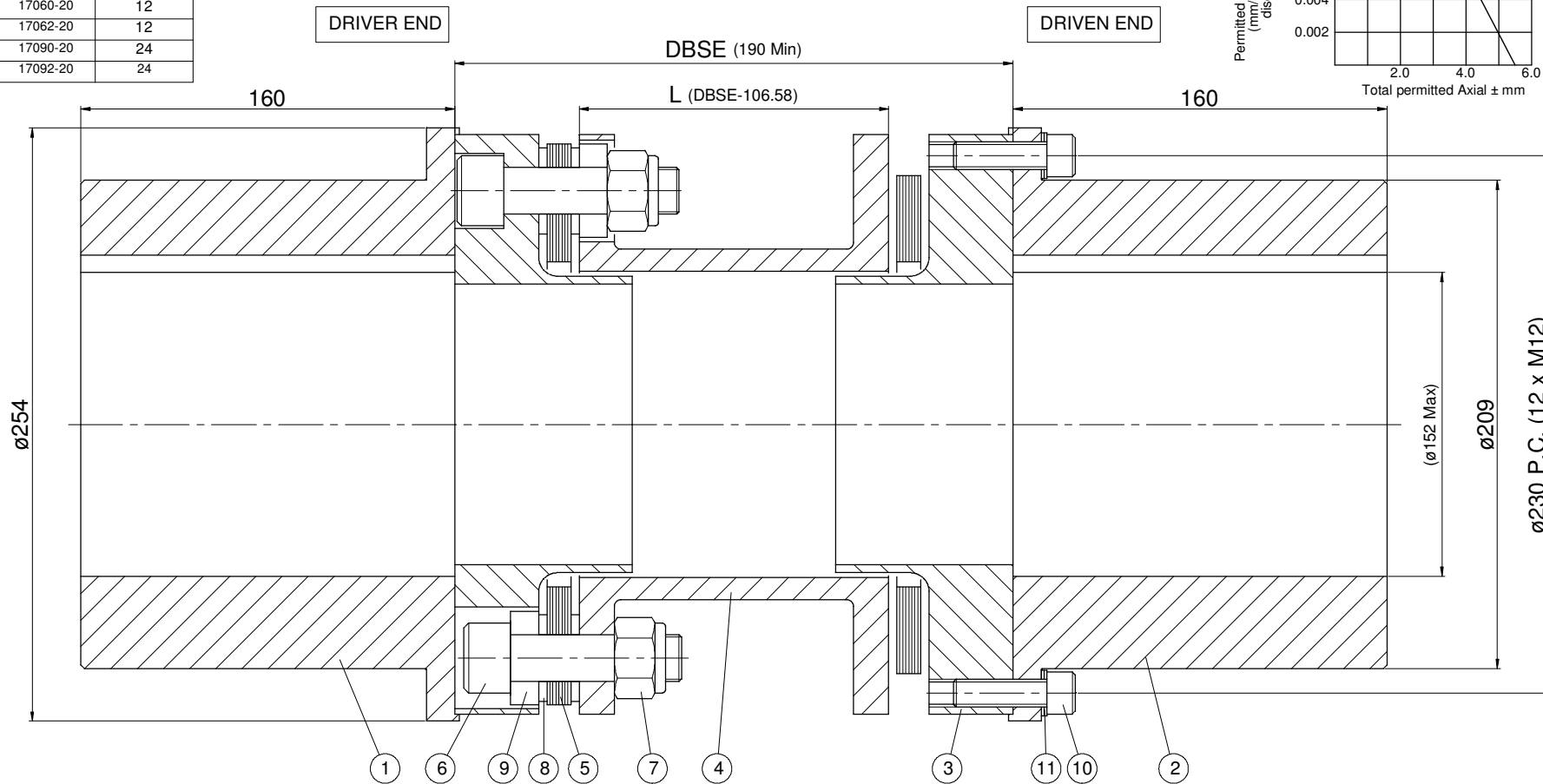
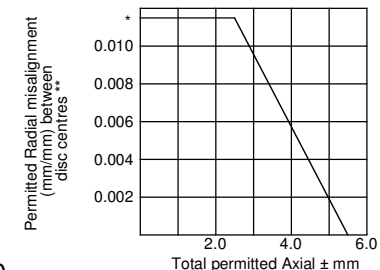
DO NOT SCALE

DIMENSIONS IN mm UNLESS OTHERWISE STATED

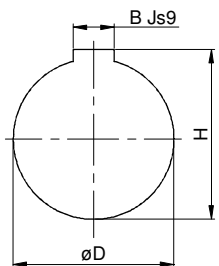
3rd ANGLE PROJECTION

PARTS LIST				
Item #	Description	Material	Part #	Qty
1	Hub	080M40	17010-20	1
2	Hub	080M40	17010-20	1
3	Adaptor	080M40	17030-20	2
4	Spacer	080M40	17040-20	1
5	Disc	AISI 301	17050-20	54
6	Main Bolt	Gr 10.9	17080-20	12
7	Lock Nut	Gr 8	17082-20	12
8	Disc Washer	605 M36T	17060-20	12
9	O/L Washer	605 M36T	17062-20	12
10	Att. Screw	Gr10.9	17090-20	24
11	Lock Washer	B/O	17092-20	24

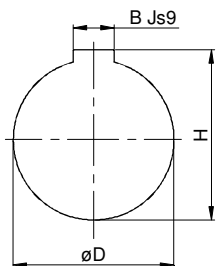
* 0.0115 mm/mm Radial Misalignment relates to 0.66° per end
 ** Distance between Disc Centres = DBSE - 89.3 mm



DRIVER END (NTS)



DRIVEN END (NTS)



FACTORY ASSEMBLED.
DO NOT DISTURB

RTT 90 Nm
(Lubricated Threads)

DUTY: CONTINUOUS -
 MAXIMUM -
 TRANSIENT -
 OVERSPEED -

COUPLING CAPACITY:
 CONTINUOUS - 16300 Nm
 PEAK - 28500 Nm
 TRANSIENT - 38000 Nm

DYNAMIC BALANCE:

ESTIMATED TOTAL VALUES:
 MASS [kg] -
 INERTIA [kgm²] -
 TORS STIFF [MNm/Rad] -
 (Includes 1/3 Shaft Penetration)



Coupling Services Ltd

Tel: +44 (0)1522 688088
 Email: sales@couplingservices.co.uk

Customer: *	Project: *
Drawn By: AL	Checked By: JMD
Date Drawn: 12/12/13	Date Checked: 12/12/13

Scale: 1:1 [A1]	Mat'l: See Parts List
-----------------	-----------------------

A	-	Original Issue	AL	12/12/13	JMD
Rev.	ECN No.	Rev. Note	By	Date	Chk
REVISIONS					
TITLE					DRAWING No.
CSD200 Disc Coupling					CSD200