

DO NOT SCALE

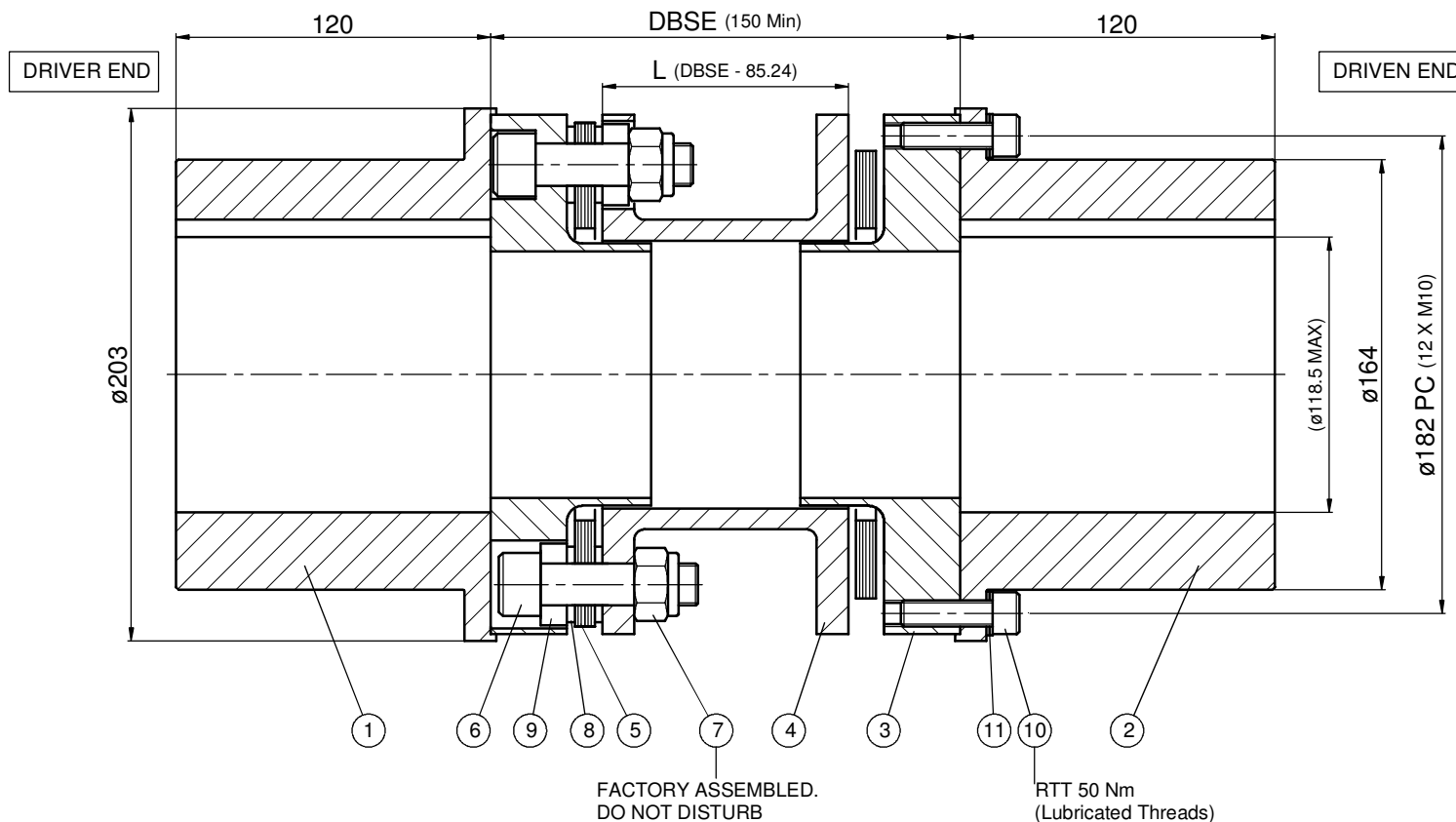
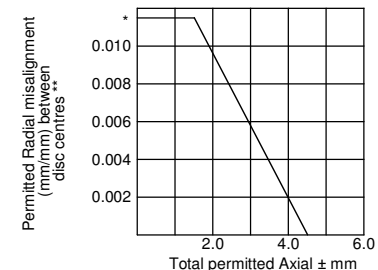
DIMENSIONS IN mm UNLESS OTHERWISE STATED

3rd ANGLE PROJECTION

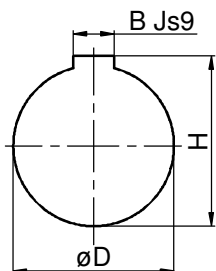
PARTS LIST

Item #	Description	Material	Part #	Qty
1	Hub	080M40	17010-16	1
2	Hub	080M40	17010-16	1
3	Adaptor	080M40	17030-16	2
4	Spacer	080M40	17040-16	1
5	Disc	AISI 301	17050-16	40
6	Main Bolt	Gr 10.9	17080-16	12
7	Lock Nut	Gr 8	17082-16	12
8	Disc Washer	605 M36T	17060-16	12
9	O/L Washer	605 M36T	17062-16	12
10	Att. Screw	Gr10.9	17090-16	24
11	Lock Washer	B/O	17092-16	24

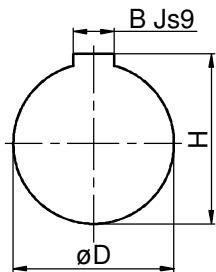
\* 0.0115 mm/mm Radial Misalignment relates to 0.66° per end  
 \*\* Distance between Disc Centres = DBSE - 71.6 mm



DRIVER END (NTS)



DRIVEN END (NTS)



DUTY: CONTINUOUS -  
 MAXIMUM -  
 TRANSIENT -  
 OVERSPEED -

COUPLING CAPACITY:  
 CONTINUOUS - 8000 Nm  
 PEAK - 14000 Nm  
 TRANSIENT - 19000 Nm

DYNAMIC BALANCE:

ESTIMATED TOTAL VALUES:  
 MASS [kg] -  
 INERTIA [kgm<sup>2</sup>] -  
 TORS STIFF [MNm/Rad] -  
 (Includes 1/3 Shaft Penetration)



**Coupling Services Ltd**

Tel: +44 (0)01522 688088  
 Email: sales@couplingservices.co.uk

Customer: \*

Project: \*

Drawn By: AL

Checked By: JMD

Scale: 1:1 [A1]

Date Drawn: 12/12/13

Date Checked: 12/12/13

Mat'l: See Parts List

Rev.	ECN No.	Original Issue	Rev. Note	AL	12/12/13	JMD
A	-	Original Issue		AL	12/12/13	JMD
		REVISIONS		By	Date	Chk

CSD160 Disc Coupling

CSD160