

DO NOT SCALE

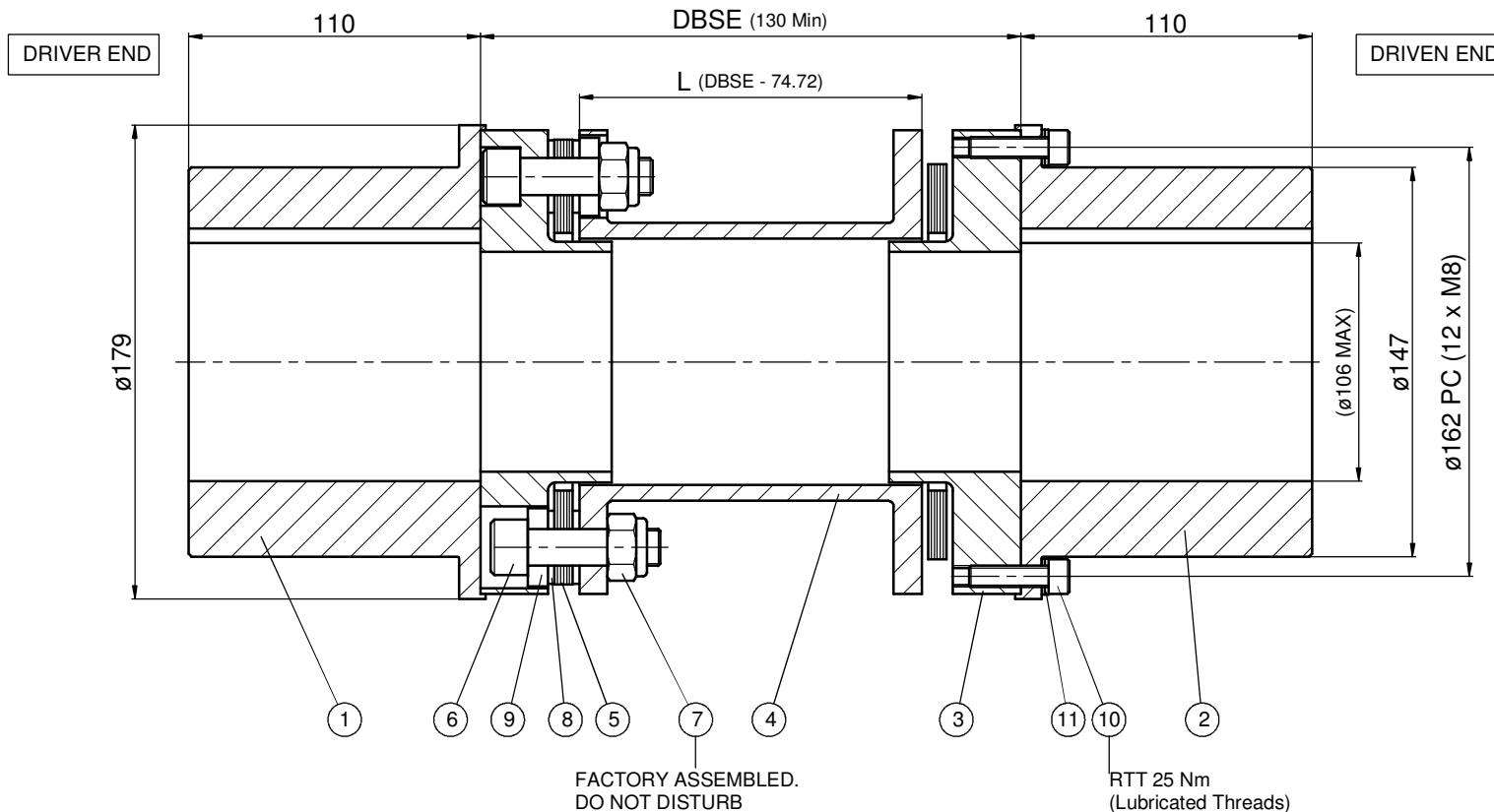
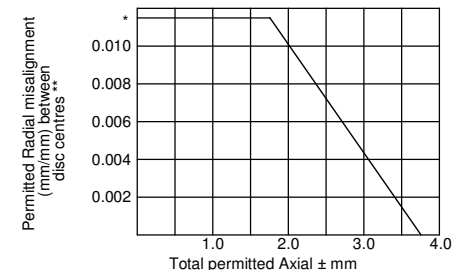
DIMENSIONS IN mm UNLESS OTHERWISE STATED

3rd ANGLE PROJECTION

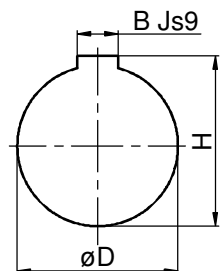
PARTS LIST

Item #	Description	Material	Part #	Qty
1	Hub	080M40	17010-14	1
2	Hub	080M40	17010-14	1
3	Adaptor	080M40	17030-14	2
4	Spacer	080M40	17040-14	1
5	Disc	AISI 301	17050-14	36
6	Main Bolt	Gr 10.9	17080-14	12
7	Lock Nut	Gr 8	17082-14	12
8	Disc Washer	605 M36T	17060-14	12
9	O/L Washer	605 M36T	17062-14	12
10	Att. Screw	Gr10.9	17090-14	24
11	Lock Washer	B/O	17092-14	24

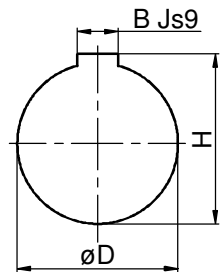
* 0.0115 mm/mm Radial Misalignment relates to 0.66° per end
 ** Distance between Disc Centres = DBSE - 62.9 mm



DRIVER END (NTS)



DRIVEN END (NTS)



DUTY: CONTINUOUS -
 MAXIMUM -
 TRANSIENT -
 OVERSPEED -

COUPLING CAPACITY:
 CONTINUOUS - 5240 Nm
 PEAK - 9000 Nm
 TRANSIENT - 12500 Nm

DYNAMIC BALANCE:

ESTIMATED TOTAL VALUES:
 MASS [kg] -
 INERTIA [kgm²] -
 TORS STIFF [MNm/Rad] -
 (Includes 1/3 Shaft Penetration)



Coupling Services Ltd

Tel: +44 (0)1522 688088
 Email: sales@couplingservices.co.uk

Customer: *

Project: *

Drawn By: AL

Checked By: JMD

Scale: 1:1 [A1]

Date Drawn: 12/12/13

Date Checked: 12/12/13

Mat'l: See Parts List

Rev.	ECN No.	Original Issue	Rev. Note	AL	12/12/13	JMD
A	-	Original Issue		AL	12/12/13	JMD
		REVISIONS		By	Date	Chk

CSD140 Disc Coupling

CSD140