

DO NOT SCALE

DIMENSIONS IN mm UNLESS OTHERWISE STATED

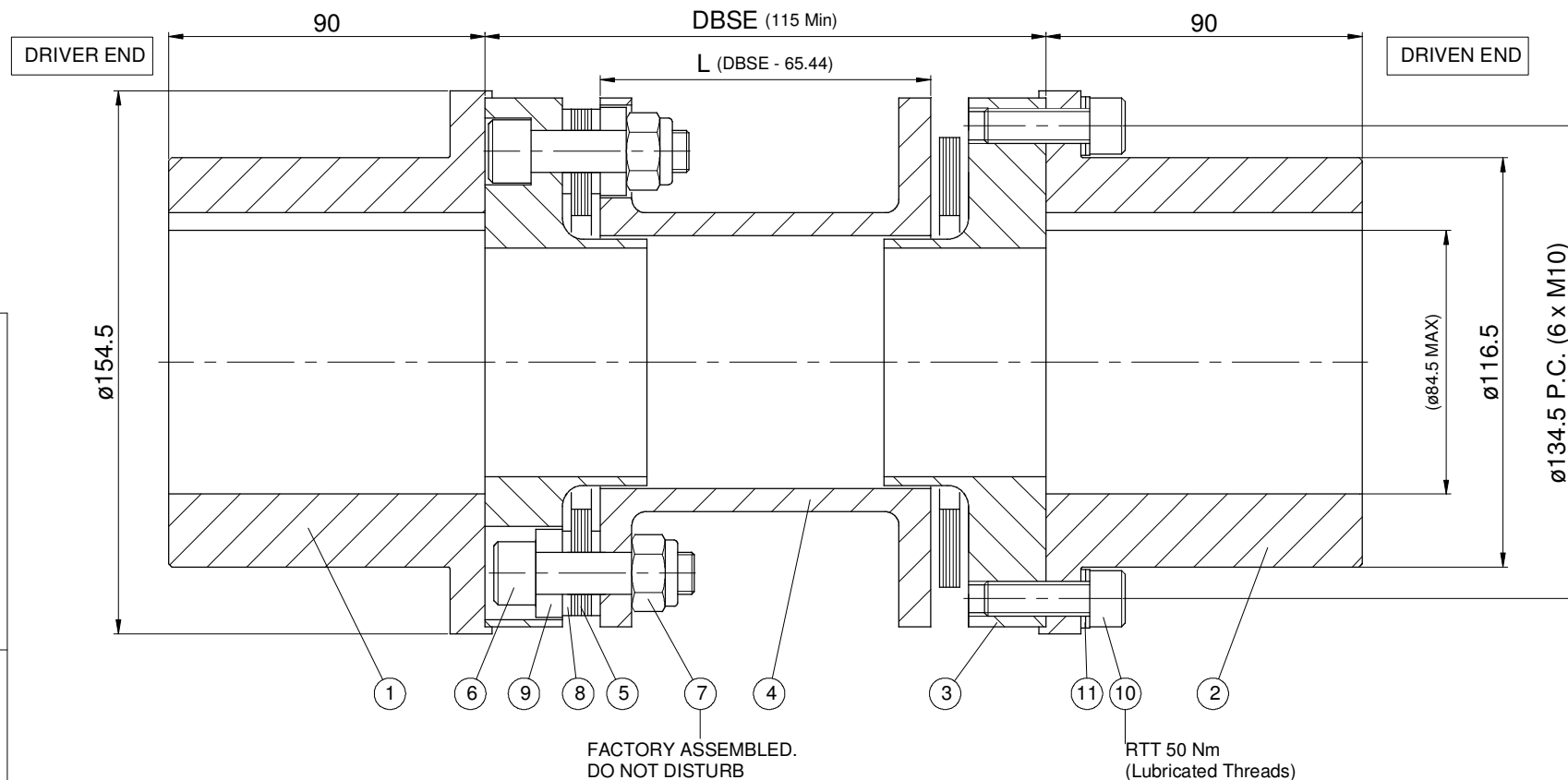
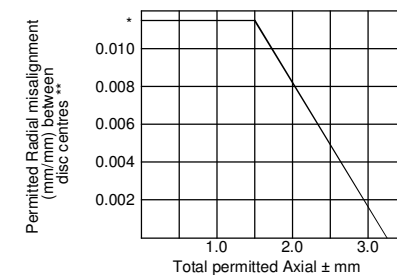
3rd ANGLE PROJECTION

PARTS LIST

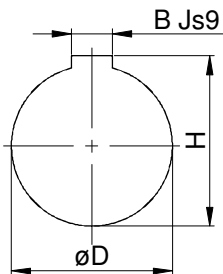
Item #	Description	Material	Part #	Qty
1	Hub	080M40	17010-12	1
2	Hub	080M40	17010-12	1
3	Adaptor	080M40	17030-12	2
4	Spacer	080M40	17040-12	1
5	Disc	AISI 301	17050-12	30
6	Main Bolt	Gr 10.9	17080-12	12
7	Lock Nut	Gr 8	17082-12	12
8	Disc Washer	605 M36T	17060-12	12
9	O/L Washer	605 M36T	17062-12	12
10	Att. Screw	Gr10.9	17090-12	12
11	Lock Washer	B/O	17092-12	12

* 0.0115 mm/mm Radial Misalignment relates to 0.66° per end

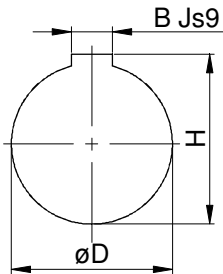
** Distance between Disc Centres = DBSE - 54.7 mm



DRIVER END (NTS)



DRIVEN END (NTS)



DUTY: CONTINUOUS -
 MAXIMUM -
 TRANSIENT -
 OVERSPEED -

COUPLING CAPACITY:
 CONTINUOUS - 3300 Nm
 PEAK - 5800 Nm
 TRANSIENT - 8000 Nm

DYNAMIC BALANCE:

ESTIMATED TOTAL VALUES:
 MASS [kg] -
 INERTIA [kgm²] -
 TORS STIFF [MNm/Rad] -
(Includes 1/3 Shaft Penetration)



Coupling Services Ltd

Tel: +44 (0)1522 688088

Email: sales@couplingservices.co.uk

Customer: *

Project: *

Drawn By: AL

Checked By: JMD

Scale: 1:1 [A2]

Date Drawn: 12/12/13

Date Checked: 12/12/13

Mat'l: See Parts List

Rev.	ECN No.	Original Issue	Rev. Note	AL	12/12/13	JMD
A	-	Original Issue		AL	12/12/13	JMD
REVISIONS			DRAWING NO.			
CSD120 Disc Coupling					CSD120	